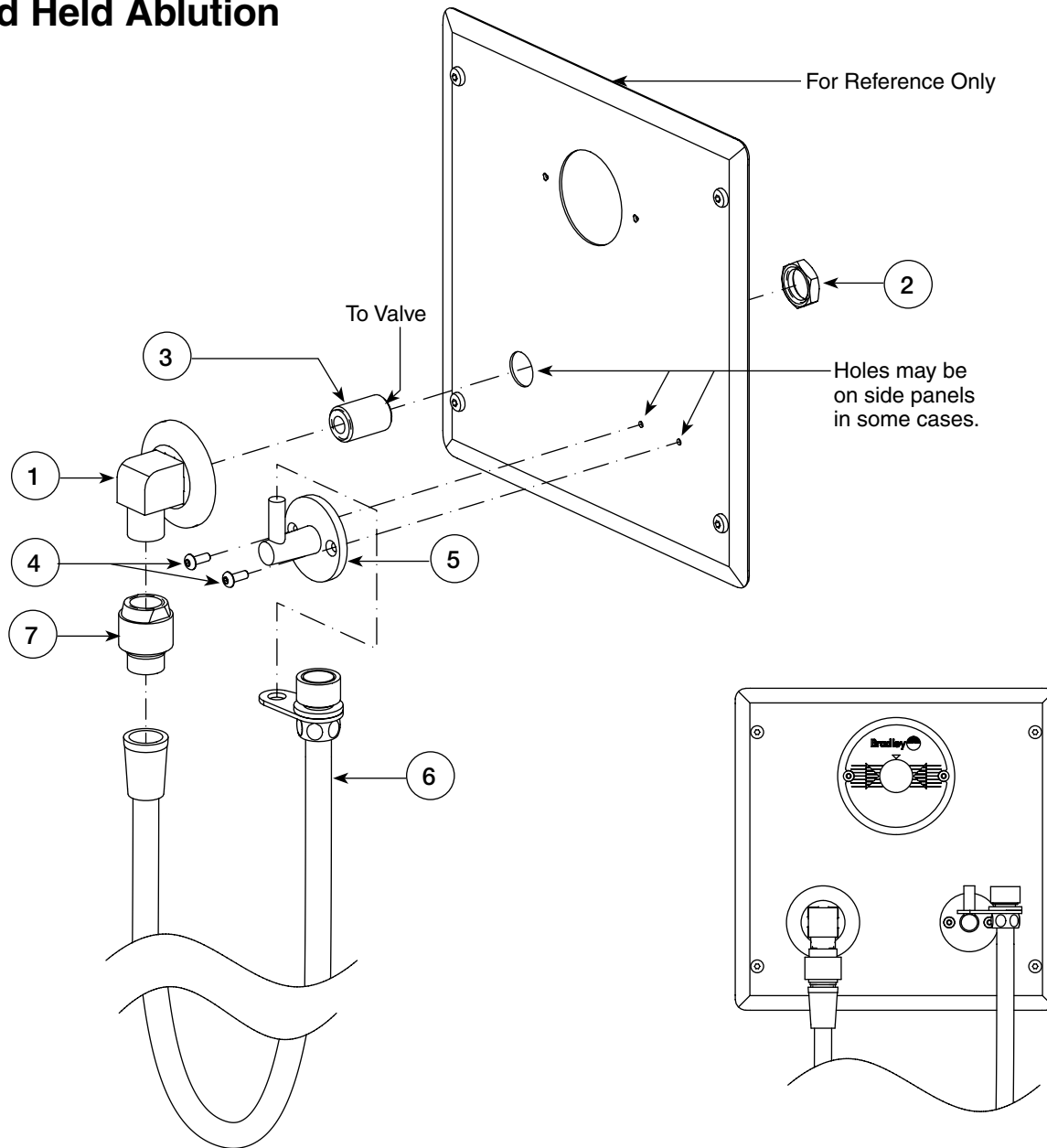


Hand Held Ablution



Item	Part No.	Description	Max. Flow Rate @ 80 ± 2 psi 1.0 gpm (3.8 L/min)	Max. Flow Rate @ 45 ± 2 psi 0.9 gpm (3.8 L/min)	Qty
1	169-941	Supply Elbow w/ Flange - HN	Y	Y	1
2	110-115	1/2" - 14 NPSM Nut - Brass	Y	Y	1
3	113-339	Nipple - 1/2" NPSM - Brass	Y	Y	1
4	160-138	Screw 10 - 24 x 1/2 BTN	Y	Y	2
5	169-949	Wall MT-Hand Shower	Y	Y	1
6	S30-117	Hose Assy - Hand Held 40 in. Long	Y	Y	1
7	169-988	Back Flow Preventer	Y	Y	1