

# Phenolic

PARTITIONS | URINAL AND SIGHT SCREENS

Solid phenolic core is composed of compressed cellulose fibers impregnated with resins. The surface laminate is fused to the resin-impregnated core. All edges are machined and finished smooth with a 15-degree beveled edge. Material will not delaminate even under extreme conditions. Materials are non-absorbent, impact and graffiti resistant. Materials are impervious to steam, soaps and detergents and will not mildew.

## MATERIAL

Mills® phenolic core partitions are perfect for high traffic areas where durability, strength and finish options are needed. Its impact resistance and superior strength are a result of high heat and high-pressure molding of solid phenolic core material with a decorative melamine surface. 12 standard phenolic colors or patterns are available. Almost any other Formica or Fundermax color or pattern can be ordered at an additional charge. Mills 3-year warranty against delamination and discoloration.

## PRODUCTS

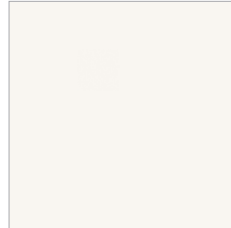
Sentinel™ overhead-braced, floor-braced, ceiling-hung and floor-to-ceiling partitions, urinal and sight screens.

## APPLICATIONS

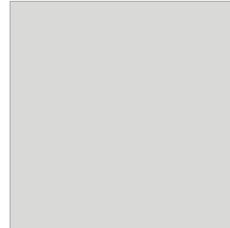
Outdoor parks, pools, shower rooms or any application where oil or water resistance is needed. Phenolic partitions withstand wet and humid environments.

Note: Due to printing variances, actual color and sheen of the material may differ. Contact your Bradley representative for material samples.

## NEW! PHENOLIC COLORS



Mission White  
(933)



Folkstone  
(927)



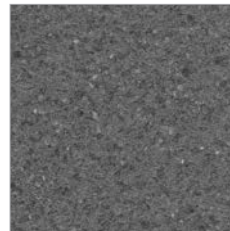
Neutral Grey Dark  
(0761)



Graphite  
(837)



Storm Solidz  
(3505)



Smoke Quarstone  
(6220)



Calimero  
(0474)



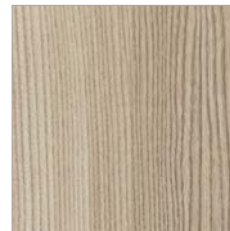
Weathered Ash  
(8842)



Margo  
(0186)



Natural Ash  
(8843)



Loen  
(0607)



Serenio  
(0320)



Commercial Washrooms. Brought to Life.

# Bradmar™ Solid Plastic

PARTITIONS | URINAL AND SIGHT SCREENS | SHOWER STALLS

Owners, facility managers, and architects appreciate the low maintenance and high aesthetic value of solid plastic.

## MATERIAL

Fabricated from an advanced formula of high density polyethylene (HDPE), Bradmar™ solid plastic from Mills® offers the lowest maintenance and the highest durability. With an odor absorption rate of nearly zero, solid plastic is the perfect solution for highly humid or wet areas. Bradmar partitions have 1-inch thick doors, panels and pilasters, and come with a 15-year warranty against rust, corrosion, and delamination.

## PRODUCTS

Sentinel™ overhead braced partitions, floor to ceiling partitions, urinal and sight screens, and shower stalls.

## APPLICATIONS

Educational institutions, theme parks, stadiums, arenas, health clubs, food service, waterparks, locker rooms, and any other high-traffic and/or high humidity or wet area.

Note: Due to printing variances, actual color and sheen of the material may differ. Contact your Bradley representative for material samples.

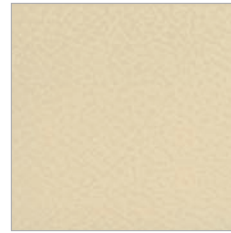
## BRADMAR COLORS



Desert Stone (S406)



Linen (M242)



Buttermilk (M226)



Beige (S202)



Canyon Granite (M244)



Gray (S200)



Charcoal Gray (S215)



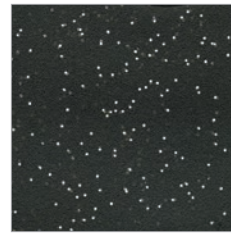
Toffee (M227)



Burgundy (S211)



Deep Blue (S203)

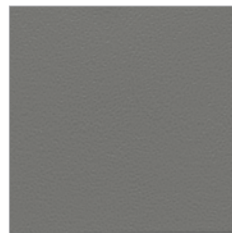


Starry Night (S225)

## BRADMAR 100% POST-CONSUMER



Black (M258)



Charcoal Gray (M248)



Toffee (M247)



Black (R205)

## BRADMAR 100% PRE-CONSUMER



Commercial Washrooms. Brought to Life.